

# DeTray's Custom Housing

presents

## The Ridgewood



**SKYLINE**  
STRENGTH • KNOWLEDGE • TRUST

### ABOUT THIS HOME

587 Square Feet

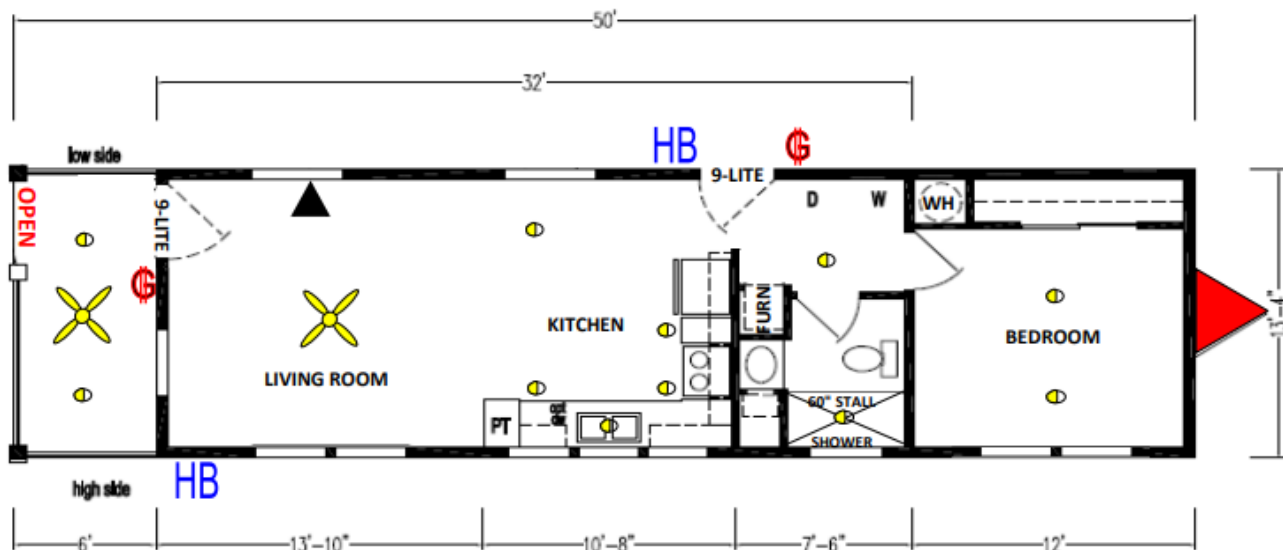
Length is 44'-0" / Includes Porch

Width is 13'-4"

1 Bedrooms / 1 Full Bath

Great for ADU Home or Family Unit

6' Covered Porch



[www.detrayscustomhousing.com](http://www.detrayscustomhousing.com)

Sales Consultants Name: \_\_\_\_\_  
Base w/ Std Features on Back: \_\_\_\_\_  
Price As Shown: \_\_\_\_\_



The Base Price Includes Some Delivery Cost, it Will be Adjusted by the Transporter Once a Definite Site Address is Determined. Any Additional Cost to DeTray's from the Transporter, the Set Up Company, or the Factory, due to Extra Milage, Difficulty Of Site, Increased Material Cost or Availability will be Added to the Price.

10209 149th St E  
Puyallup, WA 98374  
1-800-588-1116  
253-840-6773

# Ridgewood

## STANDARD FEATURES

### CONSTRUCTION

8' Sidewall Height  
Flat Ceilings Throughout  
2x6 Exterior Walls  
2x3 Interior Walls  
Nominal 3/12 Roof Pitch  
30 # Roof Load  
6" Eaves Sidewalls (Singles) 12" (Multi Sections)  
12" Eaves Front and Rear  
2x6 Floor Joist 16" O.C.  
OSB Tongue & Groove Floor Decking  
Perimeter Heat w/Toe Kick Registers  
Detachable Hitch  
Insulation R 40-21-33

### EXTERIOR

Fiber Cement Siding  
30-Year Class "A" Fire Rated Shingles  
36" 6-Panel Fiberglass Front & Rear Door  
w/Deadbolts  
Low "E" Insulated Vinyl Windows

### INTERIOR

Linoleum Entry  
Shaw® Takeaway Carpet w/Rebond Pad  
Tape and Texture w/Square Corners T/O  
2 ¼" Base Molding  
Ceiling Crown 2 ¼" Flat  
White Wood Window Casing and Trim  
T-Panel Doors  
Lever Handles

### KITCHEN

CS84 Cabinet Construction  
Shaker Style Cabinet Doors  
Hardwood Cabinet w/Hidden Hinges  
Full Extension Drawer System w/Ball Bearing Guides  
Adjustable Overhead Shelves  
Fixed Shelf in Base Cabinet  
4" Formica Backsplash w/Formica Edge  
8" Deep Stainless-Steel Sink  
Single Lever Kitchen Faucet  
Refer Overhead Cabinet

### ELECTRICAL

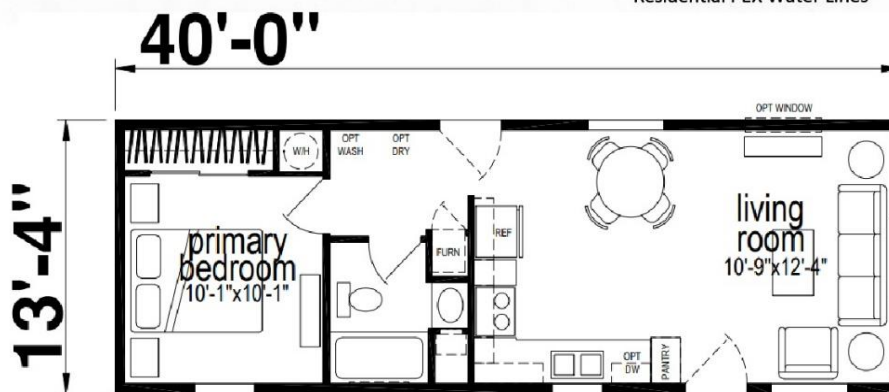
200 AMP Service  
Recessed Lights Throughout (Except Bedrooms and Living Room)  
Exterior Recept w/GFI Breaker  
Toggle Switch's & Duplex Recepts  
Smoke Detectors w/CO  
Exterior Light at All Exterior Doors

### BATH FEATURES

Shaker Style Cabinet Doors  
Hardwood Cabinet w/Hidden Hinges  
Full Extension Drawer System w/Ball Bearing Guides  
60" 1 Piece Fiberglass Tub/Showers Combo  
4" Formica Backsplash w/Formica Edge  
China Lavy Sinks  
Metal Single Lever Faucets  
Elongated China Commodes  
Power Vent Fan with Light  
24" x 36" Mirror

### PLUMBING/HEATING

Forced Air Electric Furnace  
WI-FI Thermostat  
50-Gallon Electric Water Heater w/Dual Element  
Insulated Fiberglass Heat Ducts  
Whole House Water Shutoff at Main  
Plumb for Washer and Wire for Dryer  
Whol House Fan  
Residential PEX Water Lines



J423/4014 (533 SQ. FT.) 1BEDROOM

# SKYLINE

Due to continued improvements and material change, specifications may change without notice. Room sizes are approximate.



10209 149TH ST E  
PUYALLUP, WA. 98374